

Crane for Shipyard & Port & Offshore

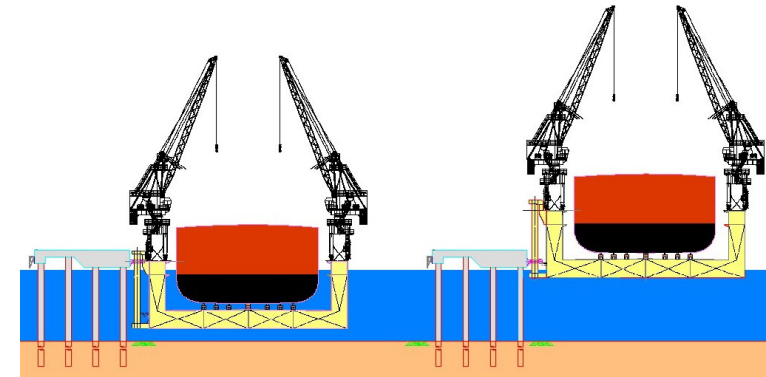
Wow, the worldman comes to our world!
for what?



Portal Jib Crane for Floating Dock

MODEL: WDC

Classification: IACS



- Non-self-propelled dock
- Self-propelled dock
- (Securing Dolphins)

Portal jib crane usually also called shipyard jib crane, level luffing crane or porta crane, are often used in wharf, bulk and container port for the loading, unloading of goods and containers from ship to quay or in turn, also used in shipyard and floating dock for building, repair of various ship.

This model has four working mechanisms, which are, luffing and traveling. It can work both independently and collaboratively. The linkage among all mechanisms greatly improves the equipment's productivity. It moves stably, is save and reliable, the ideal equipment for shipbuilding factory assembly. The company uses its rich experience, exquisite techniques and reliable technologies during designing, manufacturing and installation, assuring the product will be able to run safely, reliably and smoothly under all normal working conditions.

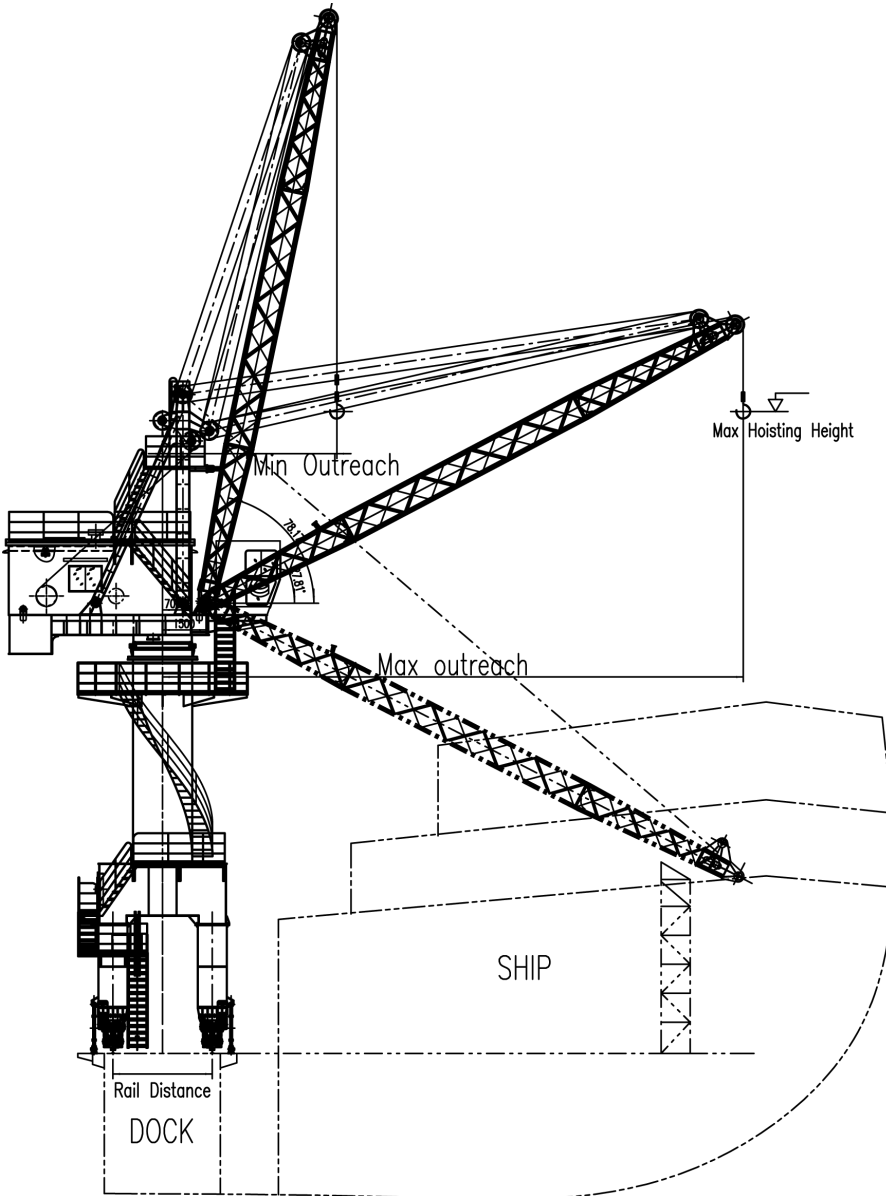
Available Classification



Portal Jib Crane for Floating Dock

MODEL: WDC

Classification: IACS



Designed to adapt your actual demanding

We can design shipyard crane based on the actual condition in shipyard, and is flexible design in variable frequency, intelligent control, installation and shipping. And we supply the best installation and shipping solution to save cost for customer.

MODEL		WDC 0500	WDC 0700	WDC 1000	WDC 1500	WDC 2000	WDC 2500	WDC 3000
Lifting capacity (ton)		5.0	7.0	10	15	20	25	30
Working outreach (mm)	min	4500	5500	6000	6500	7000	8000	8500
	max	~20000	~24000	~25000	~25000	~26500	~28000	~28000
Hoisting height (mm)	above rail	15000~24000		18000~26000		20000~32000		
	under rail	9000~15000		12000~18000		15000~25000		
Rail distance (mm)		3200~4500		3400~4800		4500~6500		
Hoisting speed (m/min)		0~20		0~24		0~30		
Luffing speed (m/min)		0~20		0~25		0~28		
Slewing speed (rpm)		0~1.2		0~0.9		0~0.9		
Traveling speed (m/min)		0~20		0~25		0~30		
Working class		A5		A5~A6		A5~A6		

Floating Crane



- Slewing pedestal crane
- Working type: main & aux hoisting



- Grab Dredger
- Working type: fixed on barge

MODEL		WFC 50	WFC 100	WFC 150	WFC 200	WFC 250
Lifting capacity (ton)		50	100	150	200	250
Working outreach (mm)	min	7500	8500	11000	11000	12000
	max	~35000	~45000	~55000	~650000	~75000
Hoisting height (mm)	above rail	20000~28000	25000~46000		30000~62000	
	under rail	9000~15000	12000~18000		15000~25000	
Working class		A5~A6	A5~A6		A5~A6	

Available Classification



Portal Jib Crane for Ship Building

MODEL: PDC

Double boom portal jib crane



- Port Container Loading & Unloading
- Port Cargo Loading & Unloading
- Spreader: telescopic spreader & grab

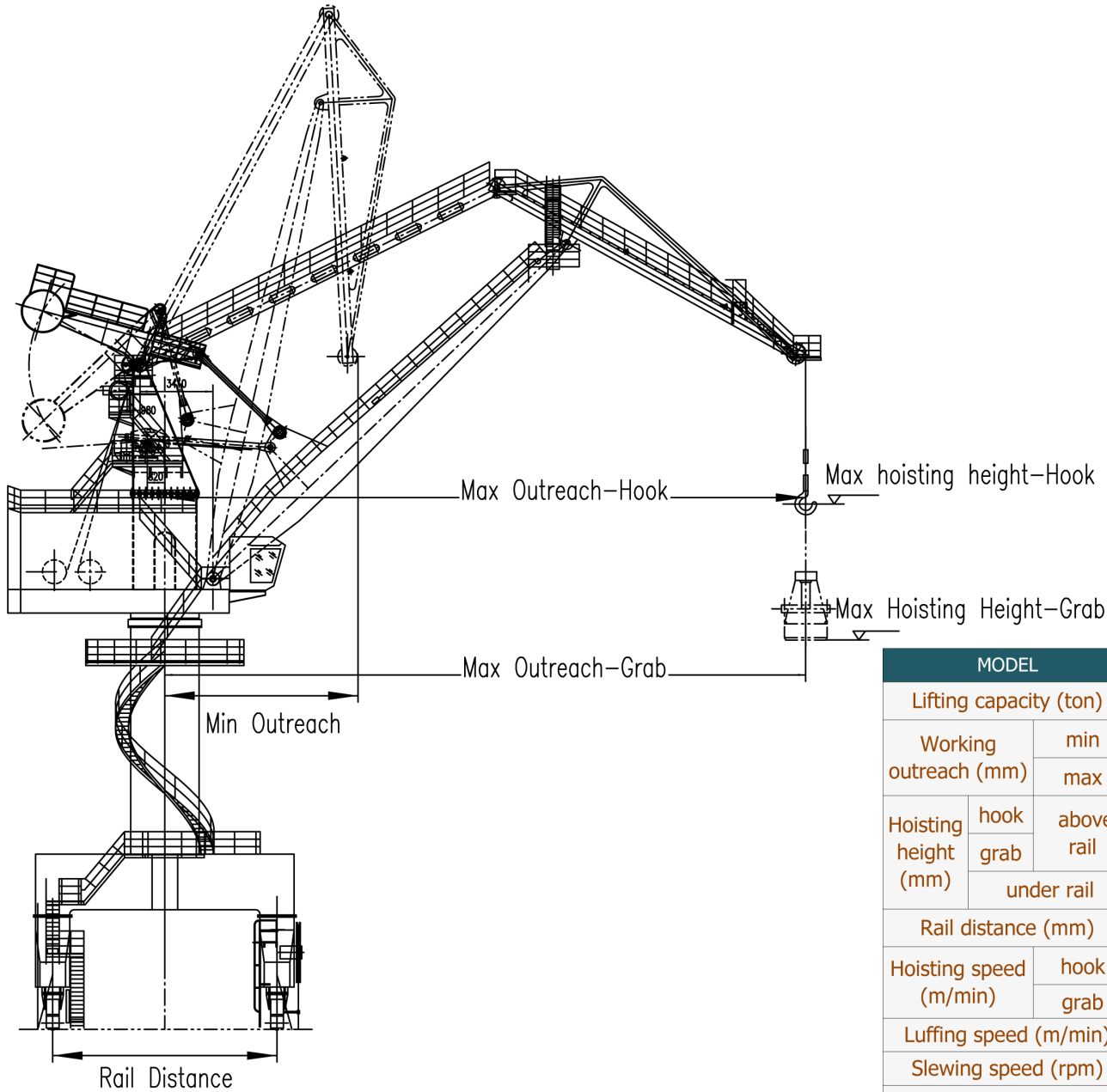
- Ship building in Shipyard
- Working grade: A6,A7,A8



Double boom portal jib crane is used to build ship as indispensable lifting equipment, they requires a light or medium working grade (A7 or A8) for double boom crane.

Also used to working in container terminal for handling of 20ft, 40ft and 45ft standard container with capacity 30 tons, 35 tons, 40 tons and 45 tons under spreader, it equipped with a telescopic container spreader for various container, is a good succedaneum of STS cranes. A grab can be also equipped with this portal jib crane for cargo unloading such as cement, coal, grain, flour and other bulk cargo.

Portal Jib Crane for Ship Building



MODEL: PDC

Double boom portal jib crane

Options for shipyard portal jib crane

Auxiliary Hook: 5t/10t/20t

Adjustable wheel pressure

Spare parts for two years

Installation in factory & shipping whole crane

MODEL			PDC 1000	PDC 1600	PDC 2500	PDC 3500	PDC 4000	PDC 4500
Lifting capacity (ton)			10	16	25	35	40	45
Working outreach (mm)	min		6000	6500	7500	7500	8000	10000
	max		~24000	~24000	~26000	~26000	~30000	~38000
Hoisting height (mm)	hook	above rail	16000~25000			18000~30000		18000~35000
		grab	12000~21000			14000~26000		14000~31000
	under rail		9000~15000			9000~16000		9000~18000
Rail distance (mm)			9000~12000			9000~12000		9000~12000
Hoisting speed (m/min)	hook		0~25			0~36		0~25
	grab		0~50			0~60		0~50
Luffing speed (m/min)			0~52			0~55		0~45
Slewing speed (rpm)			0~1.3			0~1.5		0~1.6
Traveling speed (m/min)			0~27			0~25		0~30
Working class			A6~A7~A8			A6~A7~A8		A6~A7~A8

Full Name

+ Worldman Marketing Dept.

Belongs to

+ Marketing Dept.

+ Nucleon (Xinxiang) Crane Co., Ltd

Supply Scope

+ Site & Solution Services

+ Online Project Tracking

+ Lifting Equipment Services

Free Services Scope

+ Free Site Inspection

+ Free Technical Design

+ Free Maintenance Service

+ Free DHL Spare Parts

+ Free Periodic Maintenance

+ Product Working Condition Tracking

Free Site Inspection

Contact: jess@worldmandept.com

NUCLEON(XINXIANG) CRANE CO., LTD

Tel: +86 373 5864466

Fax: +86 373 8882737

Mobile: +86 151 37380574

Email: inquire@worldmandept.com

Web: www.worldmandept.com

Address: Crane Industrial Park, Changyuan County, Henan Province, China

